



Z: SPARROWHAWK R

Medium range camera for surveillance applications

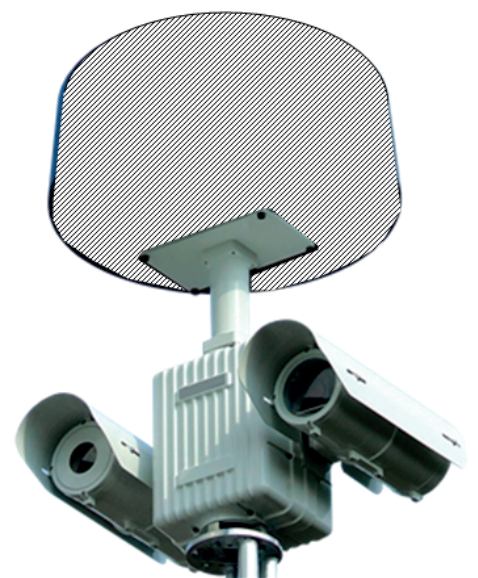
The ITAR-free Z:SparrowHawk is specially designed for observation at medium ranges.

Latest leading microbolometers and advanced CMOS-sensors reduce power consumption and provide greater sensitivity and superior image quality. The particular features turn the Z:SparrowHawk medium range observation system into a unique choice for longterm installations for fixed, mobile or stationary surveillance.

The IP-based Z:SparrowHawk can be operated as a stand-alone or networked camera by means of our Management Software suite Z:ASSESS. It also allows integration into existing legacy operating systems..

FEATURES & BENEFITS

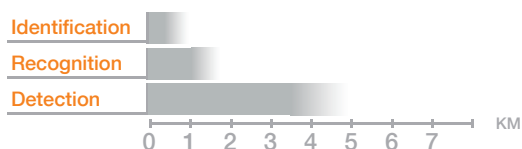
- Improvement of surveillance/ intercept missions
- User-friendly system operation
- Easy integration
- Uncooled system
- Highly mobile
- Interface for Radar mounting



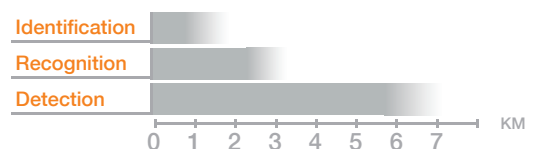
Z: SPARROWHAWK

Optical data	
Product variants	Z:SparrowHAWK R
Sensors	Uncooled Thermal Imaging Camera (SD) and CMOS Daylight Camera (HD)
Uncooled Thermal Imager	
Imaging Sensor	Uncooled micro bolometer
Resolution	640 px x 480 px
Spectral range	8 μ m to 14 μ m
Field of View (horizontal)	2.8 – 22.2
Continuous Optical Zoom	9 x
Continuous Digital Zoom	Up to 4 x
Focal Length	25 mm to 225 mm / F 1.5 (Aperture)
Focus	Manual, Preset, Athermalised
Sensor Start-Up Time	< 2 min (+ 20° C)
Daylight Camera	
Imaging Sensor	1 / 2.8-type Exmor CMOS
Resolution	1920 x 1080 px
Field of View (horizontal)	2.3° to 60°
Continuous Optical Zoom	30 x
Continuous Digital Zoom	12 x
Focal Length	4.3 mm to 129 mm
Focus	Focus Manual or Automatic
Min. Illumination	Min. Illumination \leq 0.35 lux (1 / 30 s)
Mechanical data	
Pan and Tilt Platform	
Azimuth Range / Velocity	n x 360° / 0.01° to 120° per sec
Elevation Range / Velocity	\pm 90° / 0.01° to 120° per sec
System Features	
Video Output	H.264 over IP
Command and Control	Gigabit-Ethernet / ZeO-Sys
Power	18 V DC to 32 V DC MIL-STD 1275D (normal operating mode) 24 V DC recommended
Weight	appr. 40 kg (excl. Radar)
Size (H x W x D)	appr. 470 mm x 600 mm x 600 mm (exl. Radar)
Environmental conditions	
Environmental test and EMC	Environmental test and EMC MIL-STD-810G. MIL-STD-461G and 2014 / 30 / EU. IP 67

Thermal Imaging Camera Range Performance*
Human (1.8 x 0.5 m; $\Delta T = 5K$)



Vehicle (2.3 x 2.3 m; $\Delta T = 2K$)



*DRI according to Johnson Criteria.



0714 LS 1217-15
This document is not contractual. Subject to change without notice.
Copyright © 2017 HENSOLDT.
HENSOLDT, its logo and the product names are registered trademarks. All rights reserved.

Hensoldt
info@hensoldt.net
www.hensoldt.net